



India Meteorological Department
(Ministry of Earth Sciences)

BULLETIN NO. : 05 (BOB/08/2022)

TIME OF ISSUE: 0045 HOURS IST

DATED: 12.09.2022

FROM: INDIA METEOROLOGICAL DEPARTMENT (FAX NO. 24643965/24699216/24623220)

TO: CONTROL ROOM, NDM, MINISTRY OF HOME AFFAIRS (FAX.NO. 23093750)
CONTROL ROOM NDMA (FAX.NO. 26701729)
CABINET SECRETARIAT (FAX.NO.23012284, 23018638)
PS TO HON'BLE MINISTER FOR S & T AND EARTH SCIENCES (FAX NO.23316745)
SECRETARY, MOES (FAX NO. 24629777)
H.Q. (INTEGRATED DEFENCE STAFF AND CDS) (FAX NO. 23005137/23005147)
DIRECTOR GENERAL, DOORDARSHAN (23385843)
DIRECTOR GENERAL, AIR (23421105, 23421219)
PIB MOES (FAX NO. 23389042)
UNI (FAX NO. 23355841)
D.G. NATIONAL DISASTER RESPONSE FORCE (NDRF) (FAX NO. 26105912, 2436 3260)
DIRECTOR, PUNCTUALITY, INDIAN RAILWAYS (FAX NO. 23388503)
CHIEF SECRETARY, ODISHA (FAX NO. 0674-2536660)
CHIEF SECRETARY, ANDHRA PRADESH (FAX NO. 0863-2441029, 08645-246600)
CHIEF SECRETARY, WEST BENGAL (FAX NO. 033-22144328)
CHIEF SECRETARY, CHATTISGARH (FAX NO. 771-2221206)
CHIEF SECRETARY, JHARKHAND (FAX NO. 651-2400255)
CHIEF SECRETARY, GOVT. OF MADHYA PRADESH (FAX NO. 755-2441076)
CHIEF SECRETARY, GOVT. OF TELANGANA (FAX NO. 040-23453700)
CHIEF SECRETARY, GOVT. OF MAHARASHTRA (FAX NO. 022- 22028594)

Sub: Depression over south Chhattisgarh

The Depression over south Chhattisgarh moved nearly westwards with a speed of 06 kmph during past 06 hours and lay centered at 2330 hrs IST of 11th September 2022, over south Chhattisgarh near latitude 20.0°N and longitude 81.4°E, about 190 km west-northwest of Bhawanipatna (Odisha), 30 km south-southwest of Kanker (Chhattisgarh), 120 km northwest of Jagdalpur (Chhattisgarh) and 220 km east of Chandrapur (Maharashtra).

It is likely to move nearly westwards and weaken gradually during next 12 hours.

Warnings:

(i) Rainfall (Warning Graphics enclosed)

12th September: Rainfall at most places with **heavy to very heavy rainfall** at isolated places is likely over Chhattisgarh, Gangetic West Bengal and East Madhya Pradesh and **heavy rainfall** at isolated places is likely over Odisha, Vidarbha and Telangana.

13th September: Rainfall at most places with **heavy to very heavy rainfall** at isolated places is likely over East Madhya Pradesh and **heavy rainfall** at isolated places is likely over Chhattisgarh, Odisha and Vidarbha.

(ii) Wind warning

- Squally winds speed reaching 40-50 kmph gusting to 60 kmph are very likely to prevail over northwest & westcentral Bay of Bengal and along & off North Andhra Pradesh, Odisha & West Bengal coasts on 12th September and off North Andhra Pradesh & Odisha coasts on 13th September, 2022.

(iii) Sea condition

- Sea condition will be rough to very rough over northwest & westcentral Bay of Bengal and along & off Andhra Pradesh, Odisha & West Bengal coasts on 12th September and off North Andhra Pradesh & Odisha coasts on 13th September, 2022.

(iv) Fishermen Warning (Warning graphics enclosed)

- Fishermen are advised not to venture into northwest & westcentral Bay of Bengal and along & off Andhra Pradesh, Odisha & West Bengal coasts on 12th September and off North Andhra Pradesh & Odisha coasts on 13th September, 2022.

The next bulletin will be issued at 0830 hrs IST of tomorrow, the 12th September, 2022.

(Shobhit Katiyar)
Scientist-C,
Cyclone Warning Division

Copy to: ACWC Kolkata/ ACWC Chennai/ CWC Bhubaneswar//CWC Visakhapatnam/MC Amravati/ MC Bhopal



OBSERVED AND FORECAST TRACK OF DEPRESSION OVER SOUTH CHHATTISGARH BASED ON 1800 UTC OF 11th SEPTEMBER, 2022



DATE/TIME IN UTC

IST=UTC + 0530

L: LOW PRESSURE AREA

WML: WELL MARKED LOW PRESSURE AREA

D: DEPRESSION (17-27 KT)

DD: DEEP DEPRESSION (28-33 KT)

CS: CYCLONIC STORM (34-47 KT)

SCS: SEVERE CYCLONIC STORM (48-63KT)

VSCS: VERY SEVERE CYCLONIC STORM (64-89 KT)

ESCS: EXTREMELY SEVERE CYCLONIC STORM (90-119 KT)

SuCS: SUPER CYCLONIC STORM (≥ 120 KT)

LESS THAN 34 KT

34-47 KT

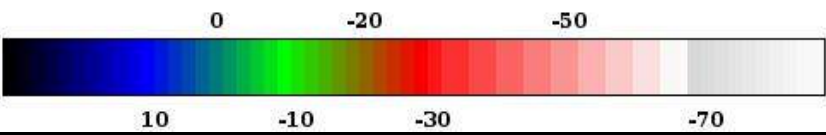
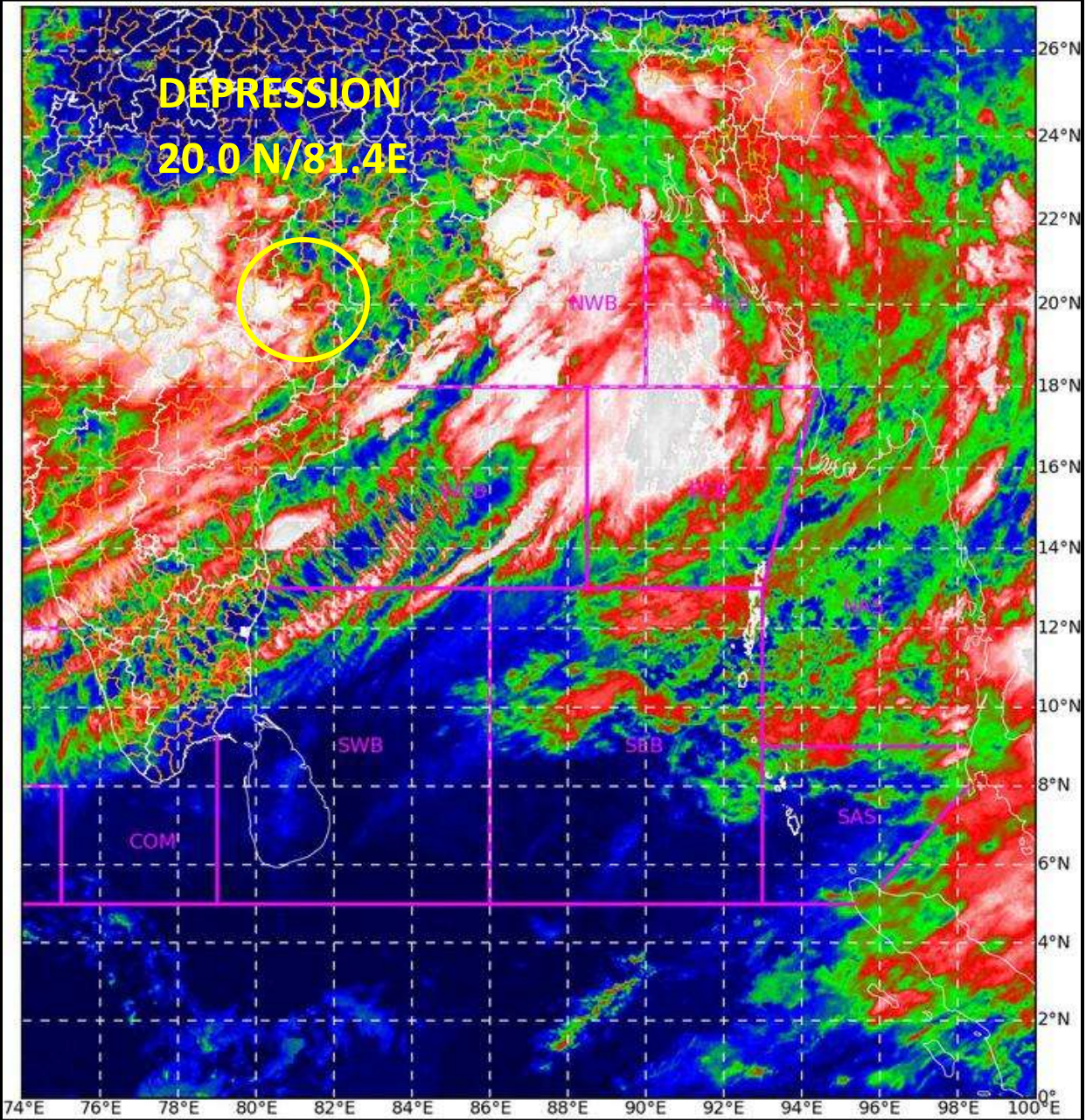
≥ 48 KT

OBSERVED TRACK

FORECAST TRACK

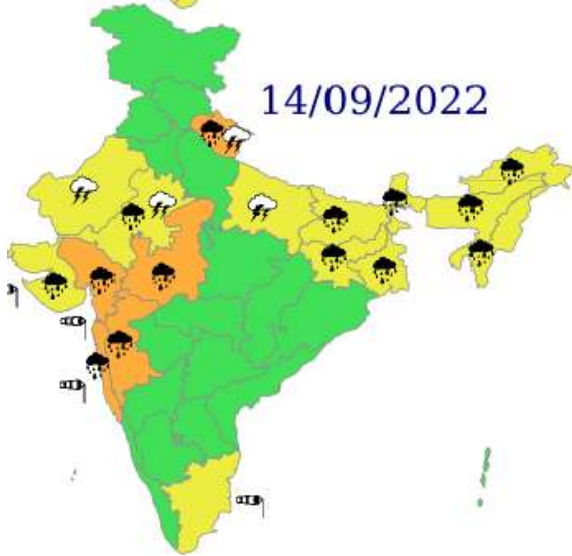
CONE OF UNCERTAINTY

SAT : INSAT-3DR IMG 11-09-2022/(1715 to 1742) GMT
IMG_TIR1_TEMP 10.8 um 11-09-2022/(2245 to 2312) IST
L1C Mercator



Celsius
IMD, DELHI

Weather Warning Graphics



Fishermen warning graphics

